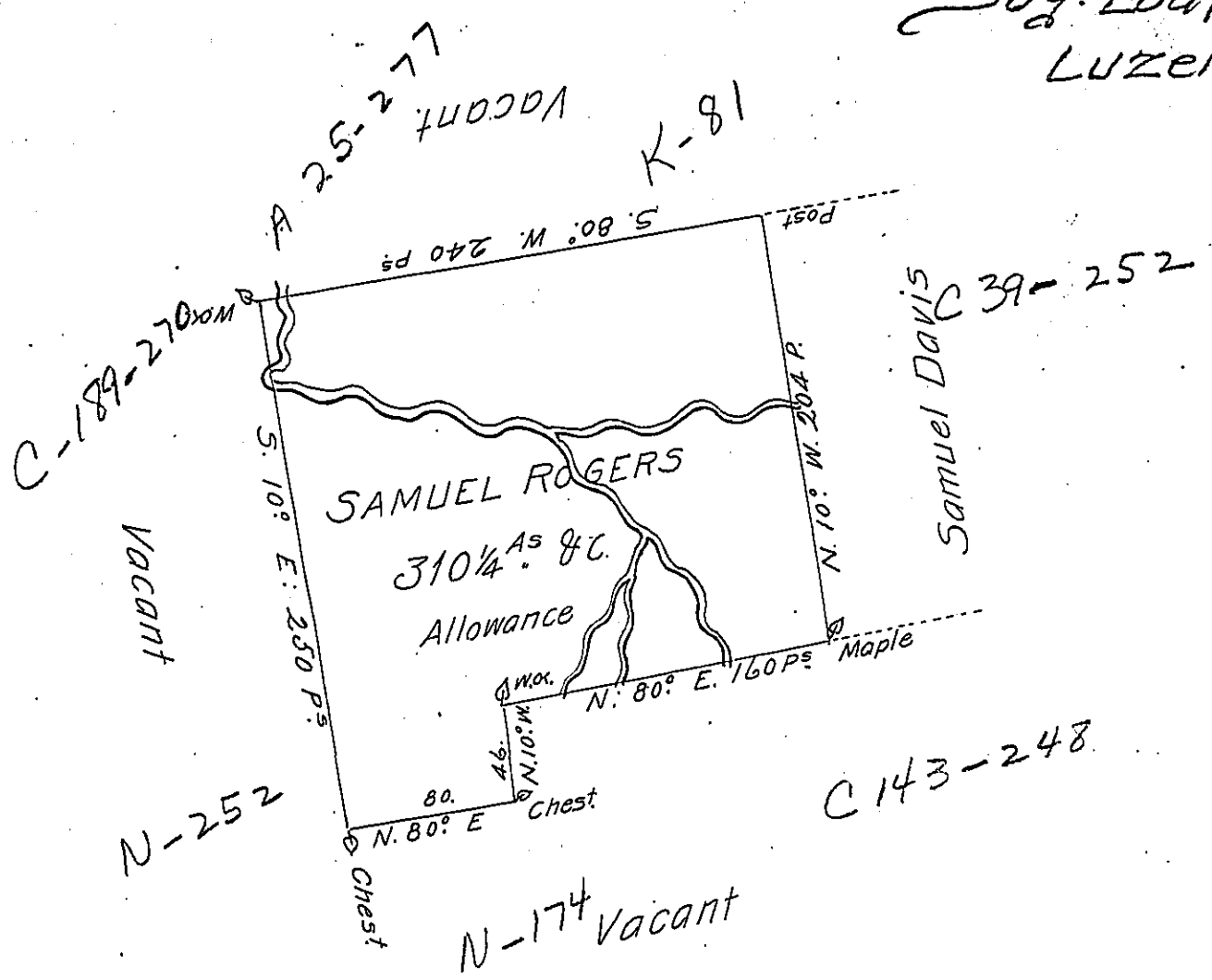


Sug. Loaf. 45
LUZERNE.



A Draught of a tract of Land Called — Situate on a Branch of Nes-
 copeck Creek abot a Mile West of the path Leading from Sisque-
 hannah River to fort Allen Adjoining Land Survd for Samuel Da-
 vis in the County of Northumberland formerly Northampton,
 Containing Three Hundred & ten acres and one Quarter of an Acre
 Besides the Usual Allowance of Six P Cent for Roads & ^{te} Surveyed
 11th Day of November 1773 for Samuel Rogers in Pursuance of
 an order Dated the 28th Day of July 1769 Number 3690
 To John Lukens Esq^r } by Cha^s Stewart Esq^r D.S.
 Surv^r Gen! } W^m Gray

IN TESTIMONY that the above is a copy of the original remaining on file in
 the Department of Internal Affairs of Pennsylvania, made
 conformably to an Act of Assembly approved the 16th day of
 February, 1833, I have hereunto set my Hand and caused
 the Seal of said Department to be affixed at Harrisburg,
 this sixth day of June 1904.

James R. Brown
 Secretary of Internal Affairs.